



# Meridian Solar Farm

EN010169

Volume 6

Environmental Statement

6.2 ES Figure 2-4: Indicative  
Grid Connection Route  
Layout Plan

APFP Regulation 5(2)(a)

Infrastructure Planning (Applications:  
Prescribed Forms and Procedure)  
Regulations 2009

March 2026



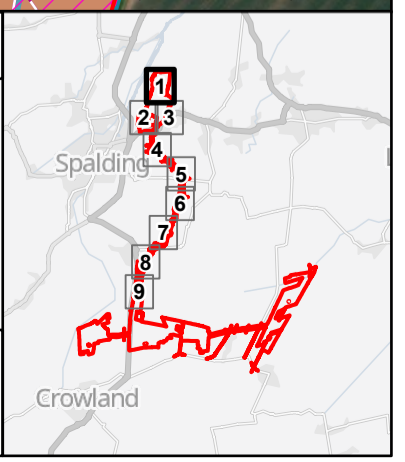
This drawing has been prepared for the use of AECOM's client. It may not be used, modified, reproduced or relied upon by third parties, except as agreed by AECOM or as required by law. AECOM accepts no responsibility, and denies any liability whatsoever, to any party that uses or relies on this drawing without AECOM's express written consent. Do not scale this document. All measurements must be obtained from the stated dimensions.

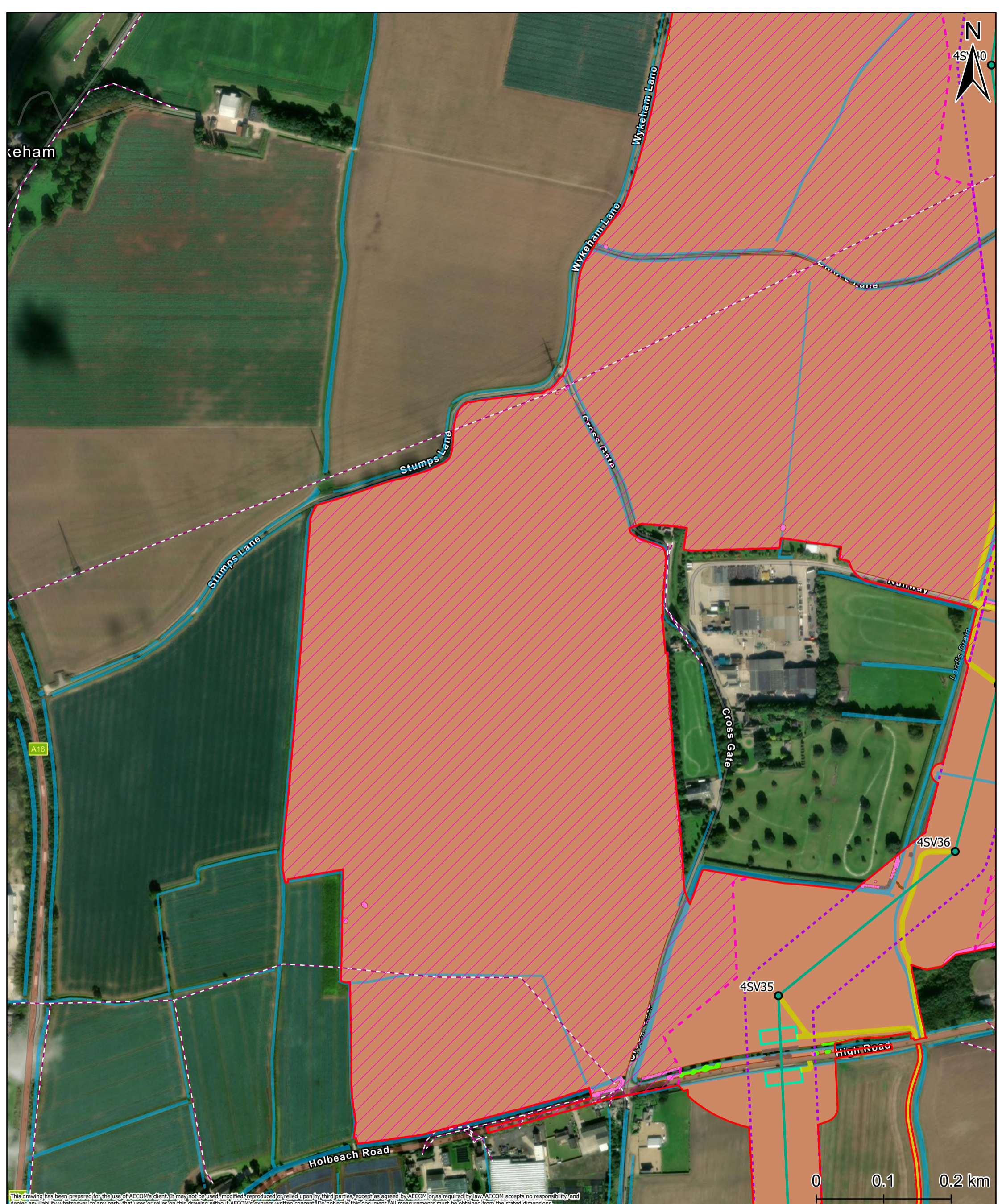
Project Title			
Meridian Solar Farm			
Map Title			
Environmental Statement Figure 2-4: Indicative Grid Connection Route Layout Plan (Sheet 1 of 9)			
Scale	Version	Drawn	Reviewed
1:5,000	0	TS	AK

<b>Legend</b>		<b>Utilities</b>	
Order Limits	Pylons	Existing Overhead Line Assets	
Gantry	Indicative OHL	<b>Watercourses</b>	
OHL Limit of Deviation	LOD for Routeing into Substation	Ordinary Watercourse	
Crossing Protection	Maintenance Access	<b>Landscape</b>	
Third Party Access		Retained Agriculture	
		<b>Vegetation</b>	
		Potential Impact	
		Retained	

Date: 20/03/2026

Copyright  
Microsoft, Vantor, Sources: Esri, TomTom, Garmin, FAO, NOAA, USGS, © OpenStreetMap contributors, and the GIS User Community, Contains OS data © Crown Copyright and database right 2026. Contains data from OS Zoomstack. Reproduced from Ordnance Survey digital map data © Crown copyright 2025. All rights reserved. Licence number AC000808122. Data sourced from LSTC, 2025. Contains public sector information licensed under the Open Government Licence v3.0. Crossing protection shown if required for maintenance.



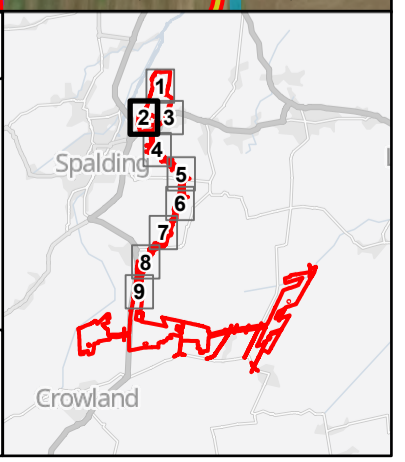


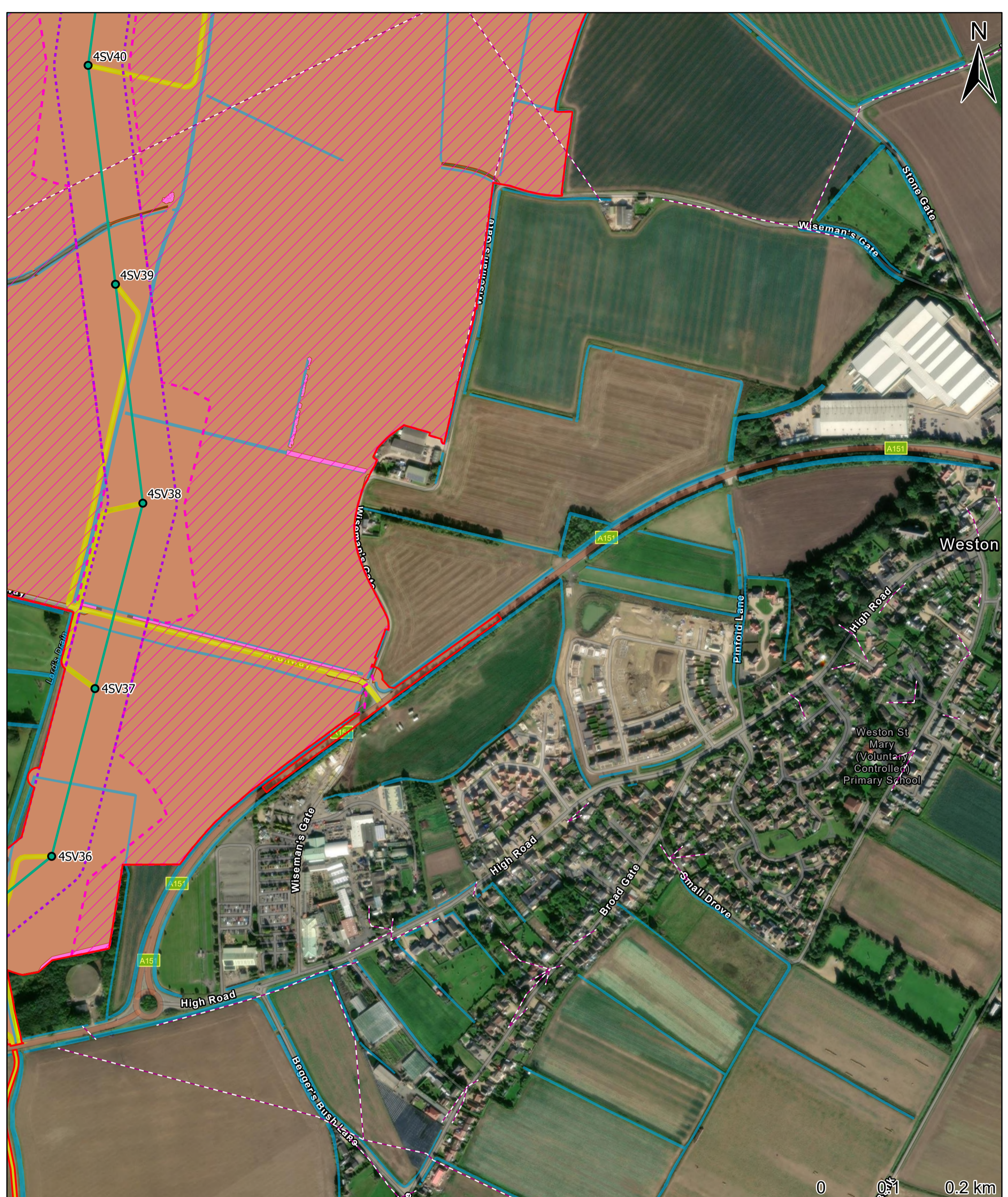
This drawing has been prepared for the use of AECOM's client. It may not be used, modified, reproduced or relied upon by third parties, except as agreed by AECOM or as required by law. AECOM accepts no responsibility, and denies any liability whatsoever, to any party that uses or relies on this drawing without AECOM's express written consent. Do not scale this document. All measurements must be obtained from the stated dimensions.

Project Title			
Meridian Solar Farm			
Map Title			
Environmental Statement Figure 2-4: Indicative Grid Connection Route Layout Plan (Sheet 2 of 9)			
Scale	Version	Drawn	Reviewed
1:5,000	0	TS	AK

<b>Legend</b>		<b>Watercourses</b>
	Order Limits	
	Pylons	
	Indicative OHL	<b>Landscape</b>
	OHL Limit of Deviation	
	LOD for Routing into Substation	<b>Vegetation</b>
	Crossing Protection	
	Maintenance Access	
<b>Utilities</b>		<b>Affected Managed</b>
	Existing Overhead Line Assets	

Date: 20/03/2026
Copyright Microsoft, Vantor, Sources: Esri, TomTom, Garmin, FAO, NOAA, USGS, © OpenStreetMap contributors, and the GIS User Community, Contains OS data © Crown Copyright and database right 2026. Contains data from OS Zoomstack. Reproduced from Ordnance Survey digital map data © Crown copyright 2025. All rights reserved. Licence number AC000808122. Data sourced from LSTC, 2025. Contains public sector information licensed under the Open Government Licence v3.0. Crossing protection shown if required for maintenance.





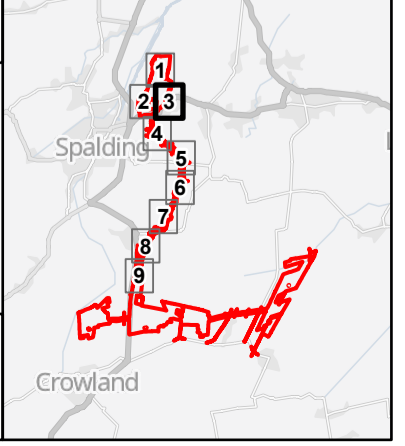
This drawing has been prepared for the use of AECOM's client. It may not be used, modified, reproduced or relied upon by third parties, except as agreed by AECOM or as required by law. AECOM accepts no responsibility, and denies any liability whatsoever, to any party that uses or relies on this drawing without AECOM's express written consent. Do not scale this document. All measurements must be obtained from the stated dimensions.

Project Title			
Meridian Solar Farm			
Map Title			
Environmental Statement Figure 2-4: Indicative Grid Connection Route Layout Plan (Sheet 3 of 9)			
Scale	Version	Drawn	Reviewed
1:5,000	0	TS	AK

<b>Legend</b>	
	Order Limits
	Pylons
	Indicative OHL
	OHL Limit of Deviation
	LOD for Routing into Substation
	Maintenance Access
<b>Utilities</b>	
	Existing Overhead Line Assets
<b>Watercourses</b>	
	Ordinary Watercourse
<b>Landscape</b>	
	Retained Agriculture
<b>Vegetation</b>	
	Potential Impact
	Retained
	Affected Managed

Date: 20/03/2026

Copyright  
Microsoft, Vantor, Sources: Esri, TomTom, Garmin, FAO, NOAA, USGS, © OpenStreetMap contributors, and the GIS User Community, Contains OS data © Crown Copyright and database right 2026. Contains data from OS Zoomstack. Reproduced from Ordnance Survey digital map data © Crown copyright 2025. All rights reserved. Licence number AC000808122. Data sourced from LSTC, 2025. Contains public sector information licensed under the Open Government Licence v3.0. Crossing protection shown if required for maintenance.





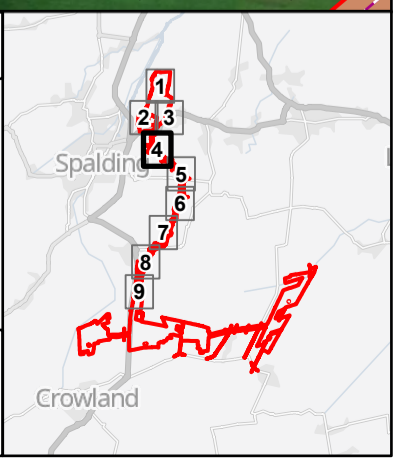
This drawing has been prepared for the use of AECOM's client. It may not be used, modified, reproduced or relied upon by third parties, except as agreed by AECOM or as required by law. AECOM accepts no responsibility, and denies any liability whatsoever, to any party that uses or relies on this drawing without AECOM's express written consent. Do not scale this document. All measurements must be obtained from the stated dimensions.

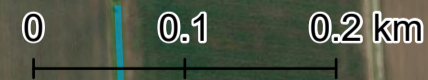
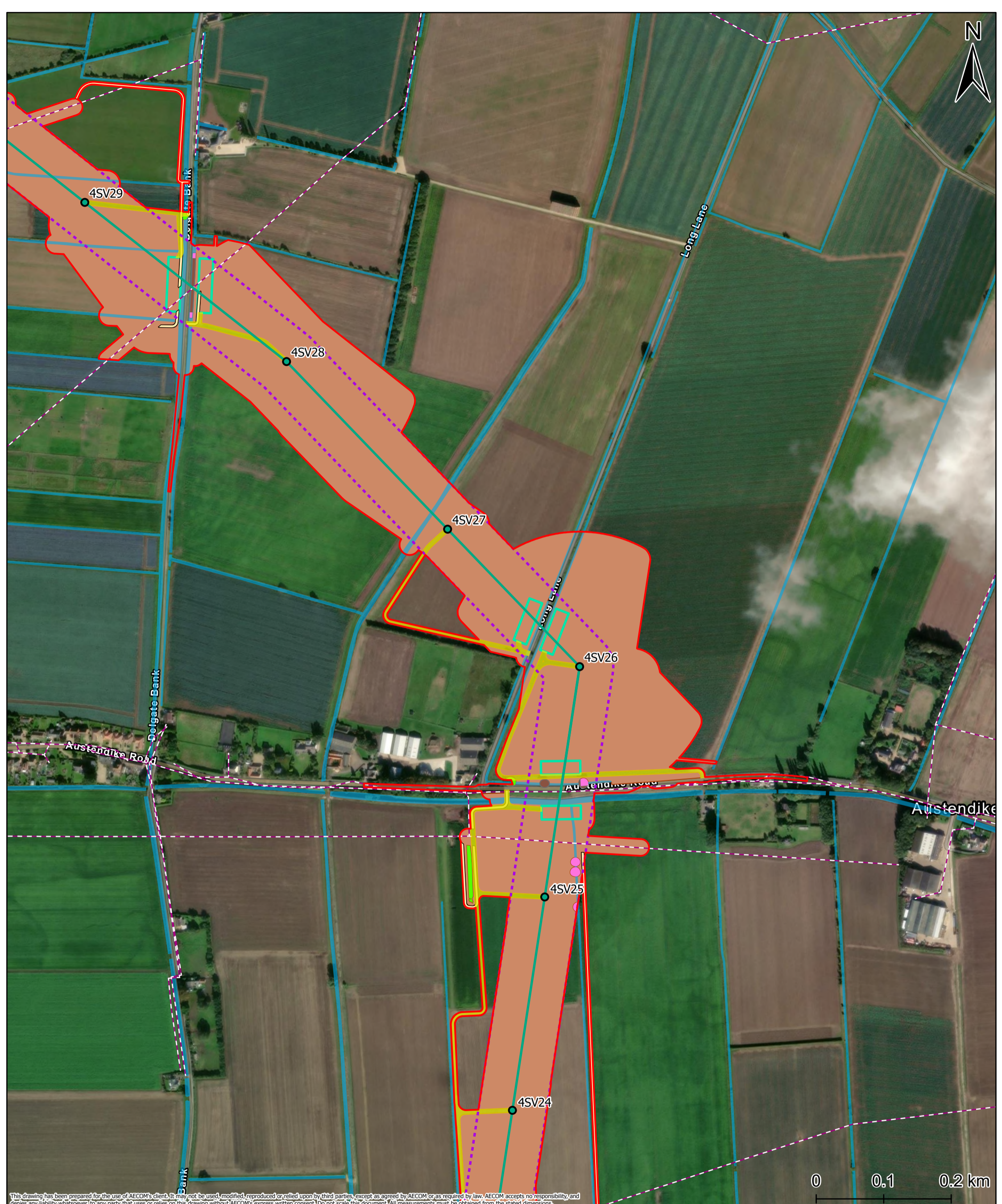
Project Title			
Meridian Solar Farm			
Map Title			
Environmental Statement Figure 2-4: Indicative Grid Connection Route Layout Plan (Sheet 4 of 9)			
Scale	Version	Drawn	Reviewed
1:5,000	0	TS	AK

<b>Legend</b>	
	Order Limits
	Pylons
	Indicative OHL
	OHL Limit of Deviation
	Crossing Protection
	Maintenance Access
	Third Party Access
<b>Utilities</b>	
	Existing Overhead Line Assets
<b>Watercourses</b>	
	Ordinary Watercourse
<b>Landscape</b>	
	Retained Agriculture
<b>Vegetation</b>	
	Potential Impact
	Retained
	Affected Managed

Date: 20/03/2026

**Copyright**  
 Microsoft, Vantor, Sources: Esri, TomTom, Garmin, FAO, NOAA, USGS, © OpenStreetMap contributors, and the GIS User Community, Contains OS data © Crown Copyright and database right 2026. Contains data from OS Zoomstack. Reproduced from Ordnance Survey digital map data © Crown copyright 2025. All rights reserved. Licence number AC000808122. Data sourced from LSTC, 2025. Contains public sector information licensed under the Open Government Licence v3.0. Crossing protection shown if required for maintenance.





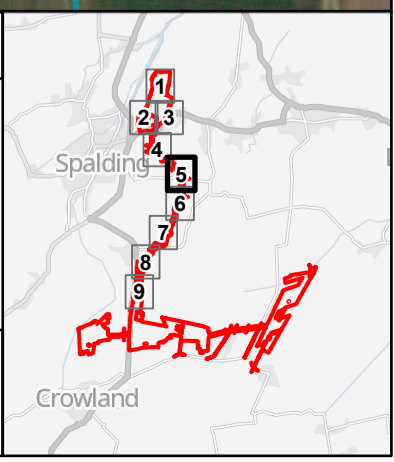
This drawing has been prepared for the use of AECOM's client. It may not be used, modified, reproduced or relied upon by third parties, except as agreed by AECOM or as required by law. AECOM accepts no responsibility, and denies any liability whatsoever, to any party that uses or relies on this drawing without AECOM's express written consent. Do not scale this document. All measurements must be obtained from the stated dimensions.

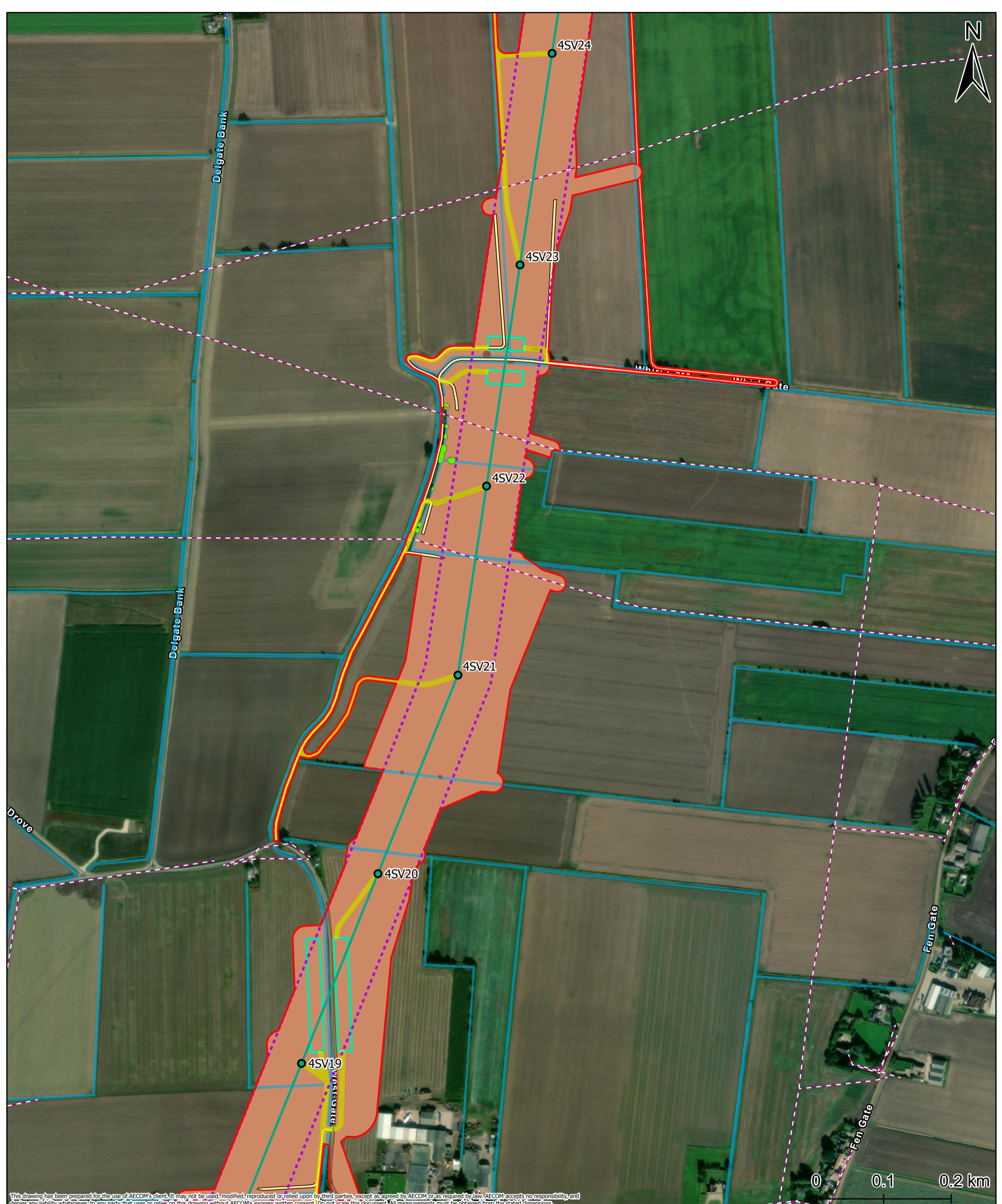
Project Title			
Meridian Solar Farm			
Map Title			
Environmental Statement Figure 2-4: Indicative Grid Connection Route Layout Plan (Sheet 5 of 9)			
Scale	Version	Drawn	Reviewed
1:5,000	0	TS	AK

<b>Legend</b>	
	Order Limits
	Pylons
	Indicative OHL
	OHL Limit of Deviation
	Crossing Protection
	Maintenance Access
	Third Party Access
<b>Utilities</b>	
	Existing Overhead Line Assets
<b>Watercourses</b>	
	Ordinary Watercourse
<b>Landscape</b>	
	Retained Agriculture
<b>Vegetation</b>	
	Potential Impact
	Retained
	Affected Managed

Date: 20/03/2026

**Copyright**  
 Microsoft, Vantor, Sources: Esri, TomTom, Garmin, FAO, NOAA, USGS, © OpenStreetMap contributors, and the GIS User Community, Contains OS data © Crown Copyright and database right 2026. Contains data from OS Zoomstack. Reproduced from Ordnance Survey digital map data © Crown copyright 2025. All rights reserved. Licence number AC000808122. Data sourced from LSTC, 2025. Contains public sector information licensed under the Open Government Licence v3.0. Crossing protection shown if required for maintenance.



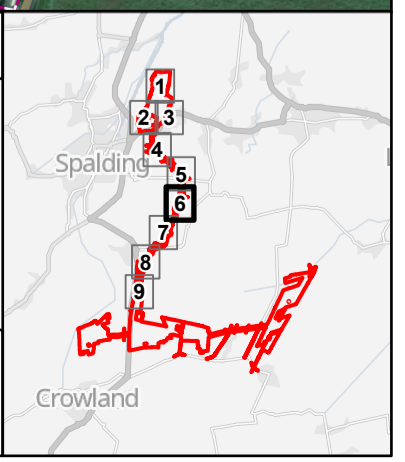
This drawing has been prepared for the use of AECOM's client. It may not be used, modified, reproduced or relied upon by third parties, except as agreed by AECOM or as required by law. AECOM accepts no responsibility, and denies any liability whatsoever, to any party that uses or relies on this drawing without AECOM's express written consent. Do not scale this document. All measurements must be obtained from the stated dimensions.

Project Title <b>Meridian Solar Farm</b>			
Map Title <b>Environmental Statement Figure 2-4: Indicative Grid Connection Route Layout Plan (Sheet 6 of 9)</b>			
Scale 1:5,000	Version 0	Drawn TS	Reviewed AK

<b>Legend</b>		<b>Watercourses</b>
Order Limits	Pylons	Ordinary Watercourse
Indicative OHL	OHL Limit of Deviation	<b>Landscape</b>
Crossing Protection	Maintenance Access	Retained Agriculture
Third Party Access	Utilities	<b>Vegetation</b>
Existing Overhead Line Assets		Retained
		Affected Managed

Date: 20/03/2026

Copyright  
Microsoft, Vantor, Sources: Esri, TomTom, Garmin, FAO, NOAA, USGS, © OpenStreetMap contributors, and the GIS User Community, Contains OS data © Crown Copyright and database right 2026. Contains data from OS Zoomstack. Reproduced from Ordnance Survey digital map data © Crown copyright 2025. All rights reserved. Licence number AC000808122. Data sourced from LSTC, 2025. Contains public sector information licensed under the Open Government Licence v3.0. Crossing protection shown if required for maintenance.



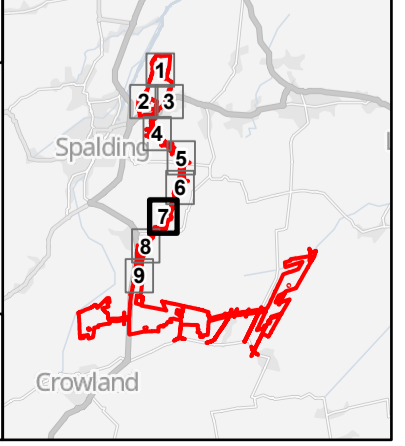
This drawing has been prepared for the use of AECOM's client. It may not be used, modified, reproduced or relied upon by third parties, except as agreed by AECOM or as required by law. AECOM accepts no responsibility, and denies any liability whatsoever, to any party that uses or relies on this drawing without AECOM's express written consent. Do not scale this document. All measurements must be obtained from the stated dimensions.

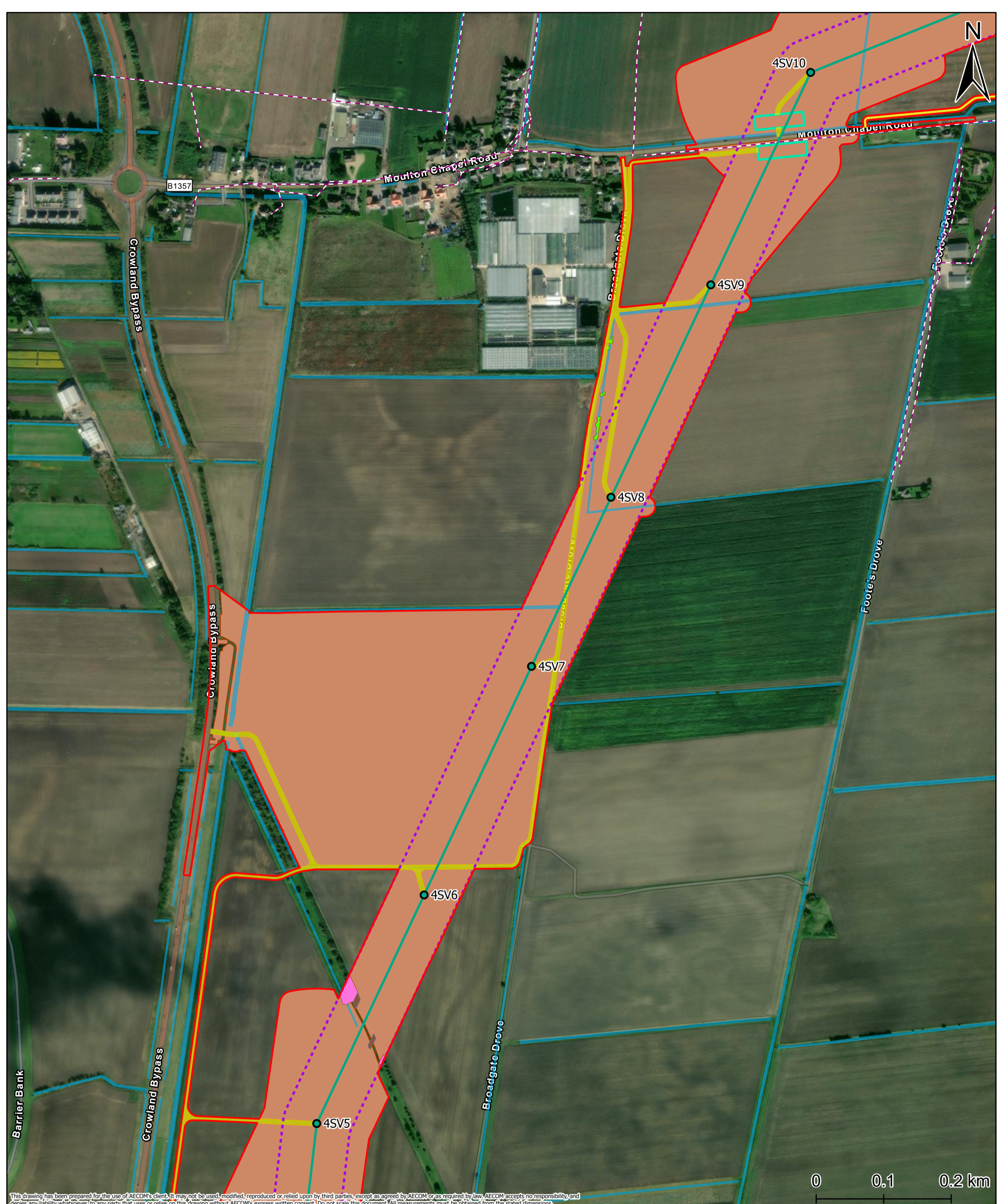
Project Title <b>Meridian Solar Farm</b>			
Map Title <b>Environmental Statement Figure 2-4: Indicative Grid Connection Route Layout Plan (Sheet 7 of 9)</b>			
Scale 1:5,000	Version 0	Drawn TS	Reviewed AK

Legend	
Order Limits	Pylons
Gantry	Existing Overhead Line Assets
Indicative OHL	Proposed Shrub
Indicative UGC	Ordinary Watercourse
CSEC Limit of Deviation	Landscape
OHL Limit of Deviation	Proposed Shrub
UGC Limit of Deviation	Retained Agriculture
Crossing Protection	Potential Impact
CSEC	Retained
CSEC Bunding	Affected Managed
Permanent Access	
Maintenance Access	
Third Party Access	

Date: 20/03/2026

**Copyright**  
Microsoft, Vantor, Sources: Esri, TomTom, Garmin, FAO, NOAA, USGS, © OpenStreetMap contributors, and the GIS User Community, Contains OS data © Crown Copyright and database right 2026. Contains data from OS Zoomstack. Reproduced from Ordnance Survey digital map data © Crown copyright 2025. All rights reserved. Licence number AC000808122. Data sourced from LSTC, 2025. Contains public sector information licensed under the Open Government Licence v3.0. Crossing protection shown if required for maintenance.





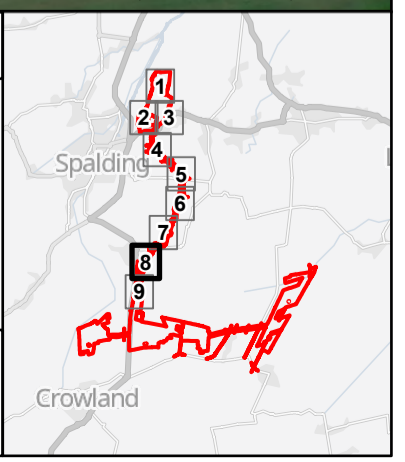
This drawing has been prepared for the use of AECOM's client. It may not be used, modified, reproduced or relied upon by third parties, except as agreed by AECOM or as required by law. AECOM accepts no responsibility, and denies any liability whatsoever, to any party that uses or relies on this drawing without AECOM's express written consent. Do not scale this document. All measurements must be obtained from the stated dimensions.

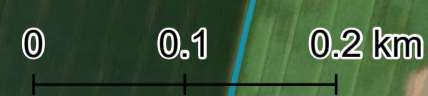
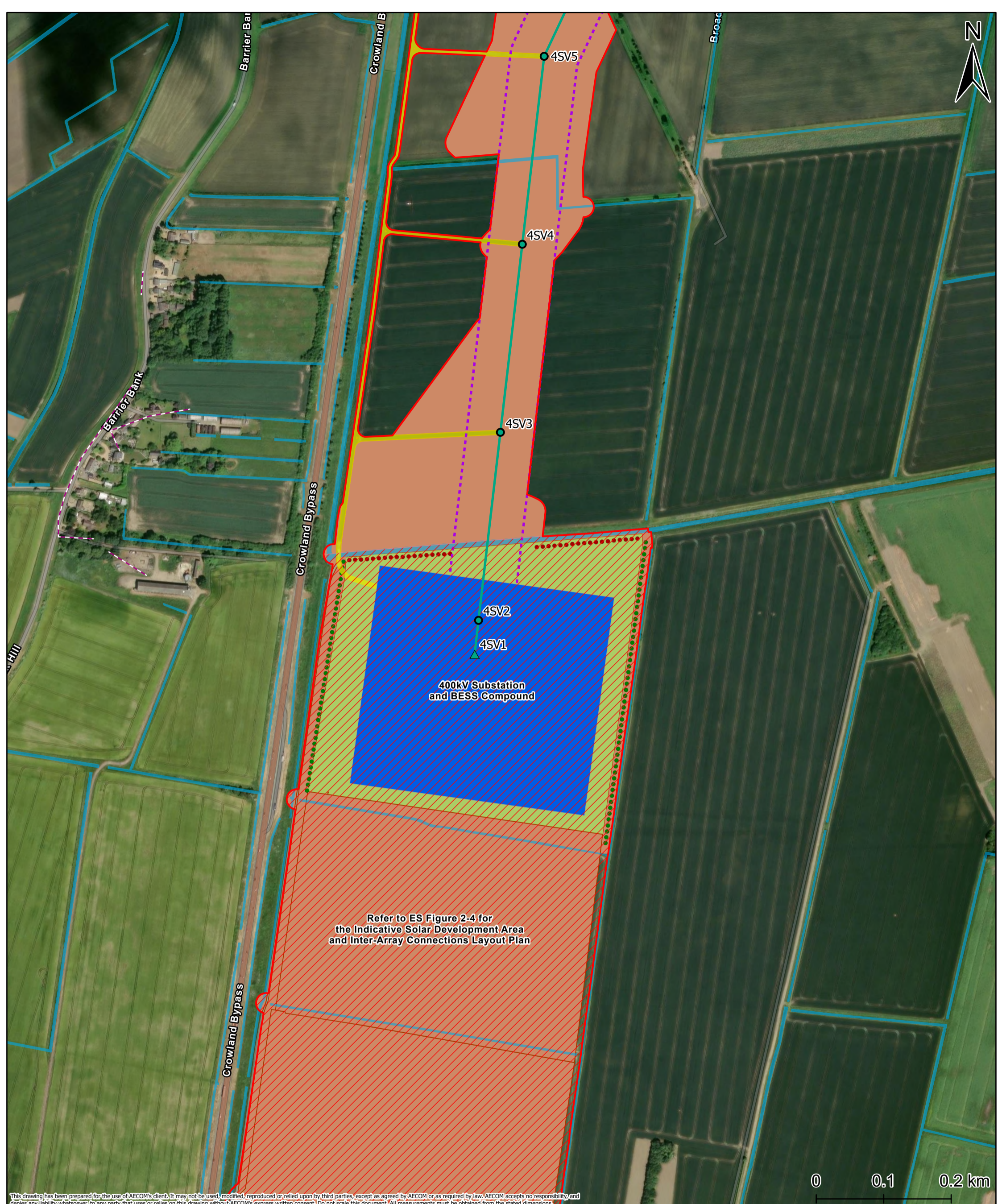
Project Title			
Meridian Solar Farm			
Map Title			
Environmental Statement Figure 2-4: Indicative Grid Connection Route Layout Plan (Sheet 8 of 9)			
Scale	Version	Drawn	Reviewed
1:5,000	0	TS	AK

<b>Legend</b>	
	Order Limits
	Pylons
	Indicative OHL
	OHL Limit of Deviation
	Crossing Protection
	Maintenance Access
	Third Party Access
<b>Utilities</b>	
	Existing Overhead Line Assets
<b>Watercourses</b>	
	Ordinary Watercourse
<b>Landscape</b>	
	Retained Agriculture
<b>Vegetation</b>	
	Potential Impact
	Retained
	Affected Managed

Date: 20/03/2026

**Copyright**  
 Microsoft, Vantor, Sources: Esri, TomTom, Garmin, FAO, NOAA, USGS, © OpenStreetMap contributors, and the GIS User Community, Contains OS data © Crown Copyright and database right 2026. Contains data from OS Zoomstack. Reproduced from Ordnance Survey digital map data © Crown copyright 2025. All rights reserved. Licence number AC000808122. Data sourced from LSTC, 2025. Contains public sector information licensed under the Open Government Licence v3.0. Crossing protection shown if required for maintenance.





This drawing has been prepared for the use of AECOM's client. It may not be used, modified, reproduced or relied upon by third parties, except as agreed by AECOM or as required by law. AECOM accepts no responsibility, and denies any liability whatsoever, to any party that uses or relies on this drawing without AECOM's express written consent. Do not scale this document. All measurements must be obtained from the stated dimensions.

Project Title <b>Meridian Solar Farm</b>			
Map Title <b>Environmental Statement Figure 2-4: Indicative Grid Connection Route Layout Plan (Sheet 9 of 9)</b>			
Scale 1:5,000	Version 0	Drawn TS	Reviewed AK

Legend	
Order Limits	Ordinary Watercourse
Solar Development Area	<b>Landscape</b>
Pylons	Proposed Band of Shrubs & Scattered Trees
Gantry	Proposed Band of Shrubs
Indicative OHL	Proposed Species Rich Grassland
OHL Limit of Deviation	Retained Agriculture
Substation	<b>Vegetation</b>
Maintenance Access	Retained
<b>Utilities</b>	
Existing Overhead Line Assets	

Date: 20/03/2026

**Copyright**  
 Microsoft, Vantor, Sources: Esri, TomTom, Garmin, FAO, NOAA, USGS, © OpenStreetMap contributors, and the GIS User Community, Contains OS data © Crown Copyright and database right 2026. Contains data from OS Zoomstack. Reproduced from Ordnance Survey digital map data © Crown copyright 2025. All rights reserved. Licence number AC000808122. Data sourced from LSTC, 2025. Contains public sector information licensed under the Open Government Licence v3.0. Crossing protection shown if required for maintenance.

